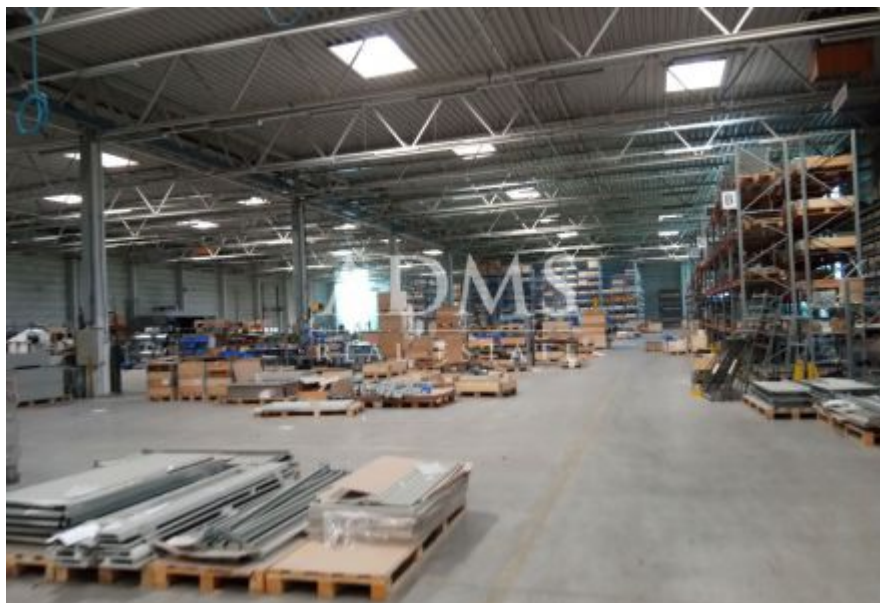


## Sale: Production hall Kriváň

ID 11578375



<b>Region:</b>	Banskobystrický kraj
<b>District:</b>	Detva
<b>Town:</b>	Kriváň
<b>Street:</b>	Kriváň
<b>Category:</b>	Commercial objects
<b>Property type:</b>	Manufacturing
<b>Floor area:</b>	10800 m <sup>2</sup>
<b>Built-up area:</b>	10406 m <sup>2</sup>
<b>Plot area:</b>	98893 m <sup>2</sup>
<b>Price:</b>	0,00 €

### LOCATION:

- industrial area is located outside of urban zone
- region of Banska Bystrica
- Zvolen - 26 km
- Banská Bystrica - 42 km
- R2 highway - 2 km

### DETAILS:

- **98 893 sqm land**
- **10 000 sqm production hall**
- **800 sqm administrative building (3 floors - 266 sqm/each floor)**

### Utility networks :

- water, electricity, gas heating (SAHARA), sewage - building approval
- gas supply - convertor - regulation from high pressure to middle pressure
- compressed air distribution
- transformer station

### Production hall:

- **(200m x 50m) -10 000 sqm**
- builder - GOLDBECK
- clearance height 7,5 m
- 16 cm isolation
- 3 entrances to the hall ( for trucks)
- flat roof

- dust free concrete floors, heavy duty
- roof skylights
- plastic windows

**Administrative building:**

- **3 floors - 266 sqm/1 floor**
- connected to production hall
- lockers, dining room, meeting room, offices

**Other buildings :**

- gate house

**USE:**

- Suitable for production purposes - light industry and production, storage and logistics

**Possibilities of purchase:**

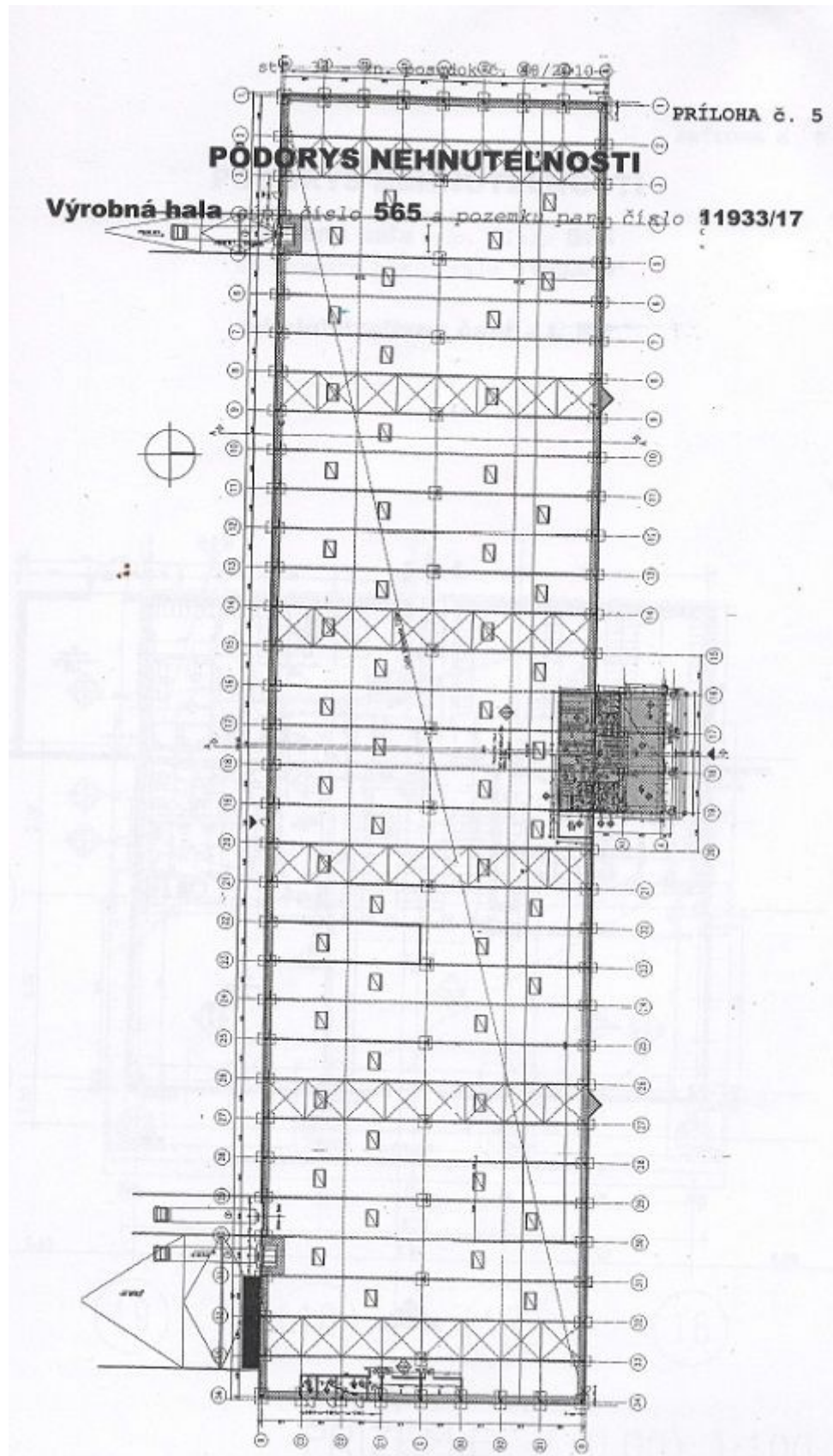
- 1/ **Plot (98 893 sqm) with building**
- 2/ **Plot (52 000 sqm) with building**
- 3/ **Plot - 24 000 sqm**
- 4/ **Plot - 20 000 sqm**

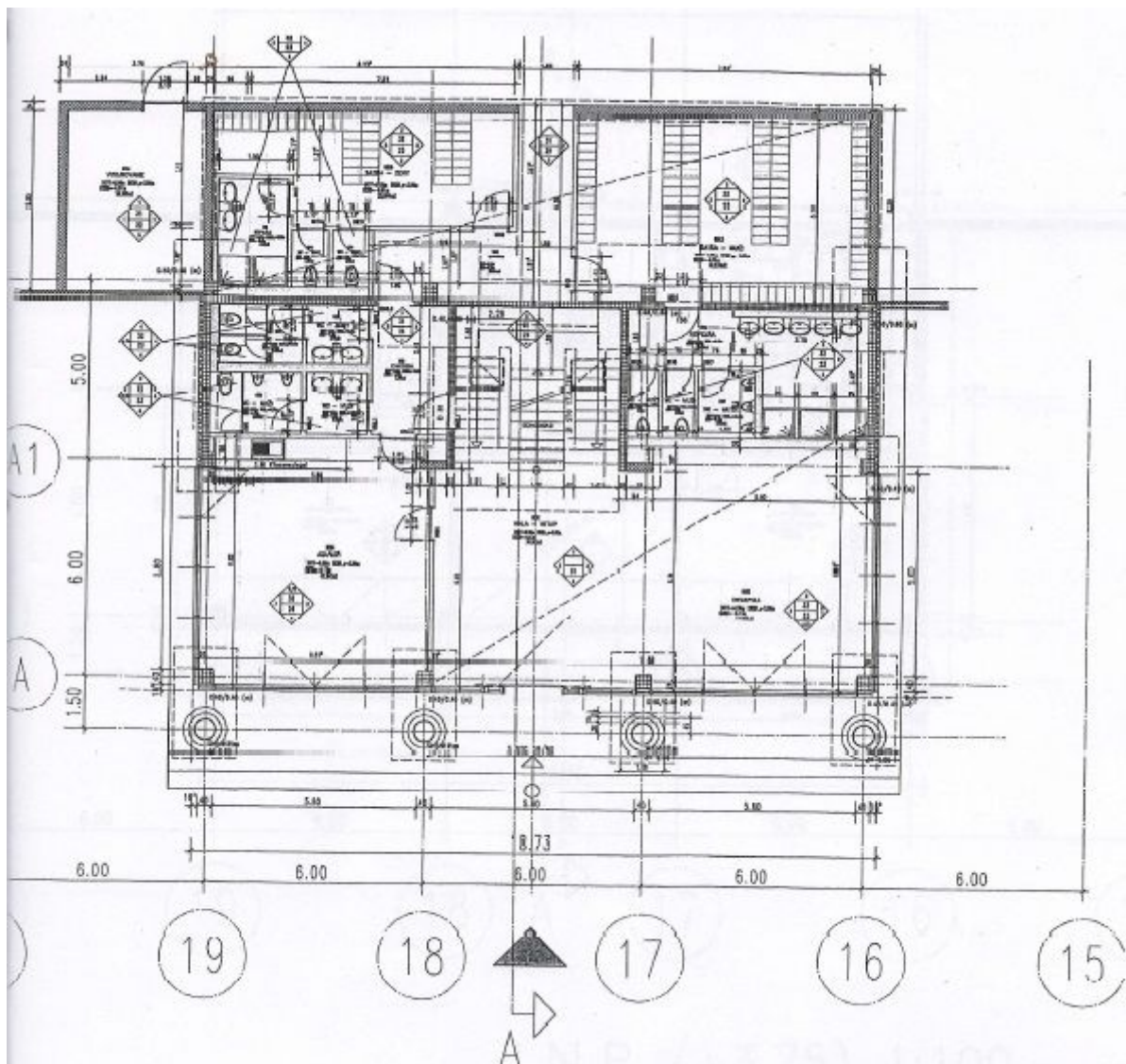
<b>Heated:</b>	yes	<b>Condition:</b>	new building
<b>Construction:</b>	mixed	<b>Access road:</b>	paved
<b>Water supply:</b>	on the plot	<b>230V:</b>	yes
<b>400V:</b>	yes	<b>Gas:</b>	on the plot
<b>Canalization:</b>	on the plot	<b>sewage treatment plant:</b>	none
<b>Žumpa / septik:</b>	none	<b>Grease separator:</b>	none
<b>Ramp:</b>	yes	<b>Hydraulic ramp:</b>	yes
<b>Crane:</b>	none	<b>Cargo Lift:</b>	none
<b>Phone:</b>	yes	<b>Internet:</b>	yes
<b>CCTV:</b>	yes	<b>Alarm:</b>	yes
<b>Security service:</b>	yes		

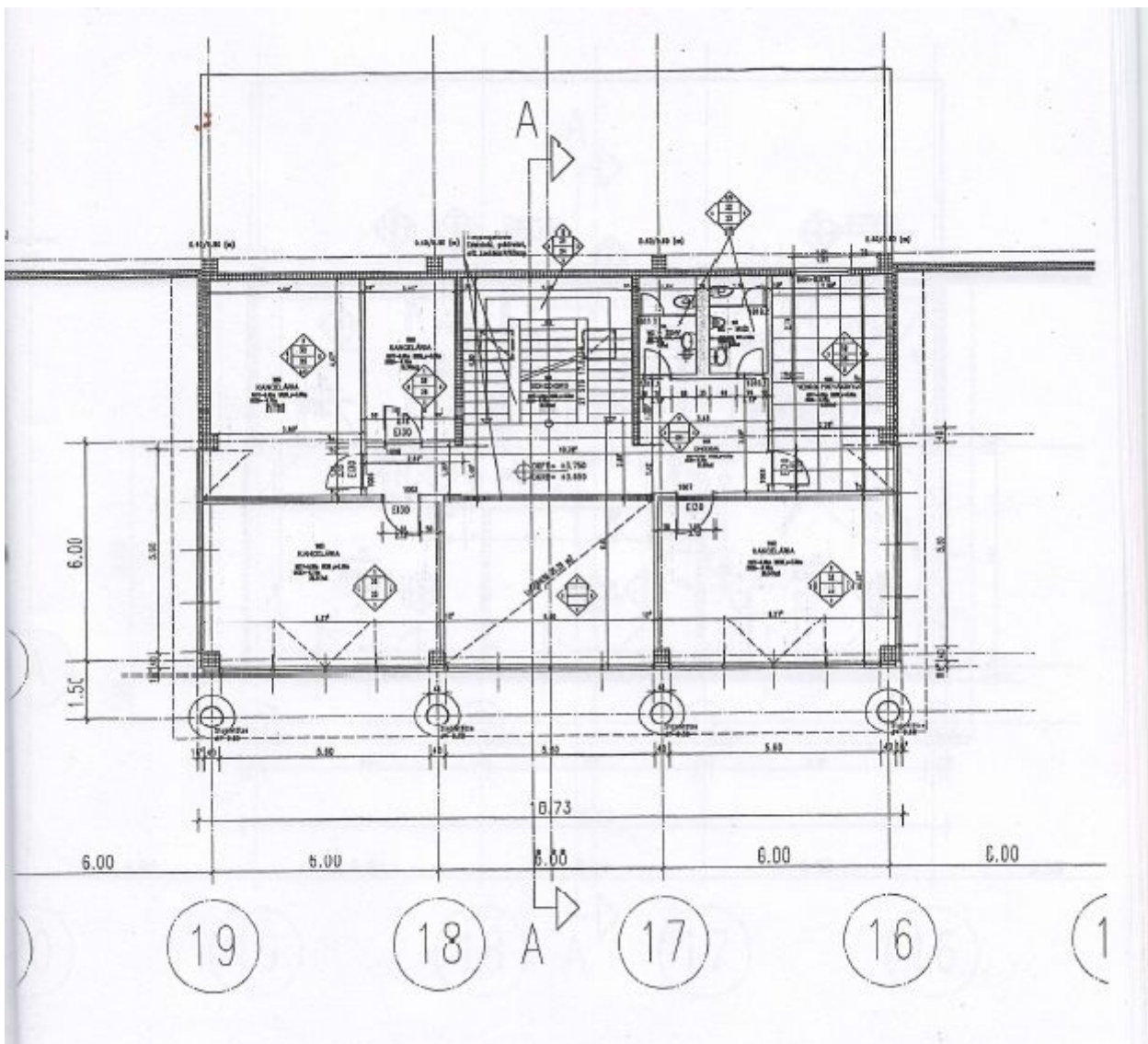




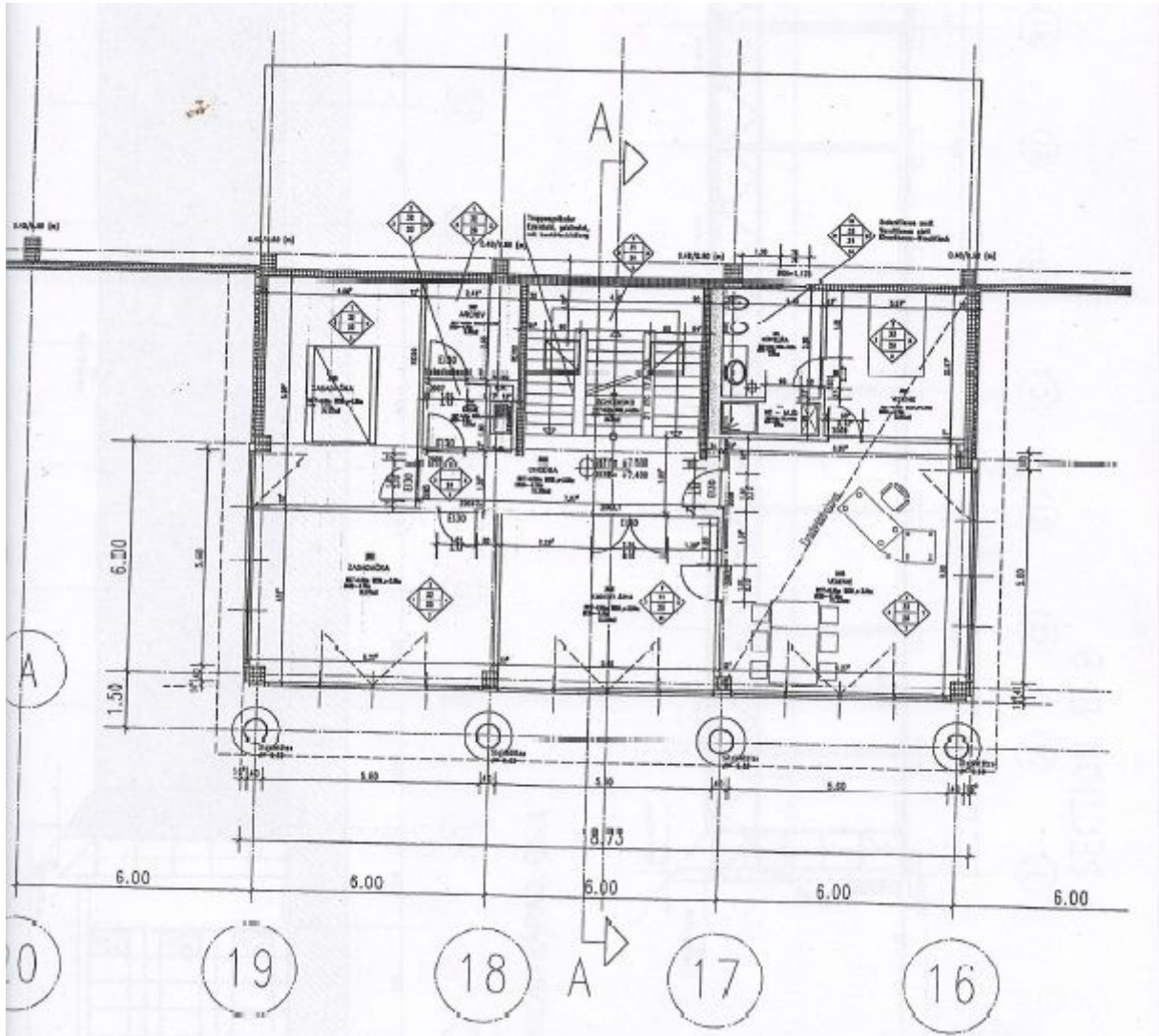


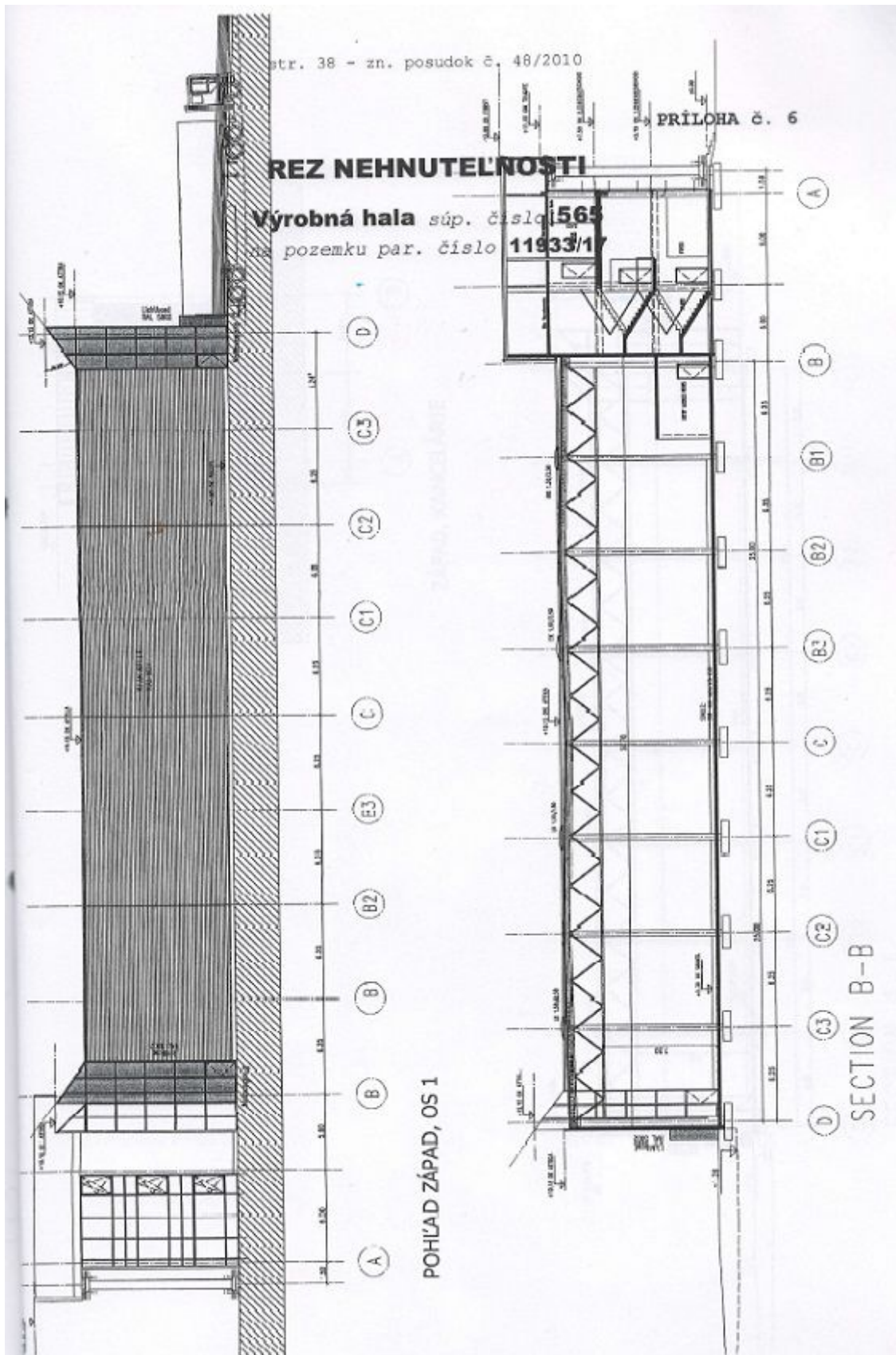












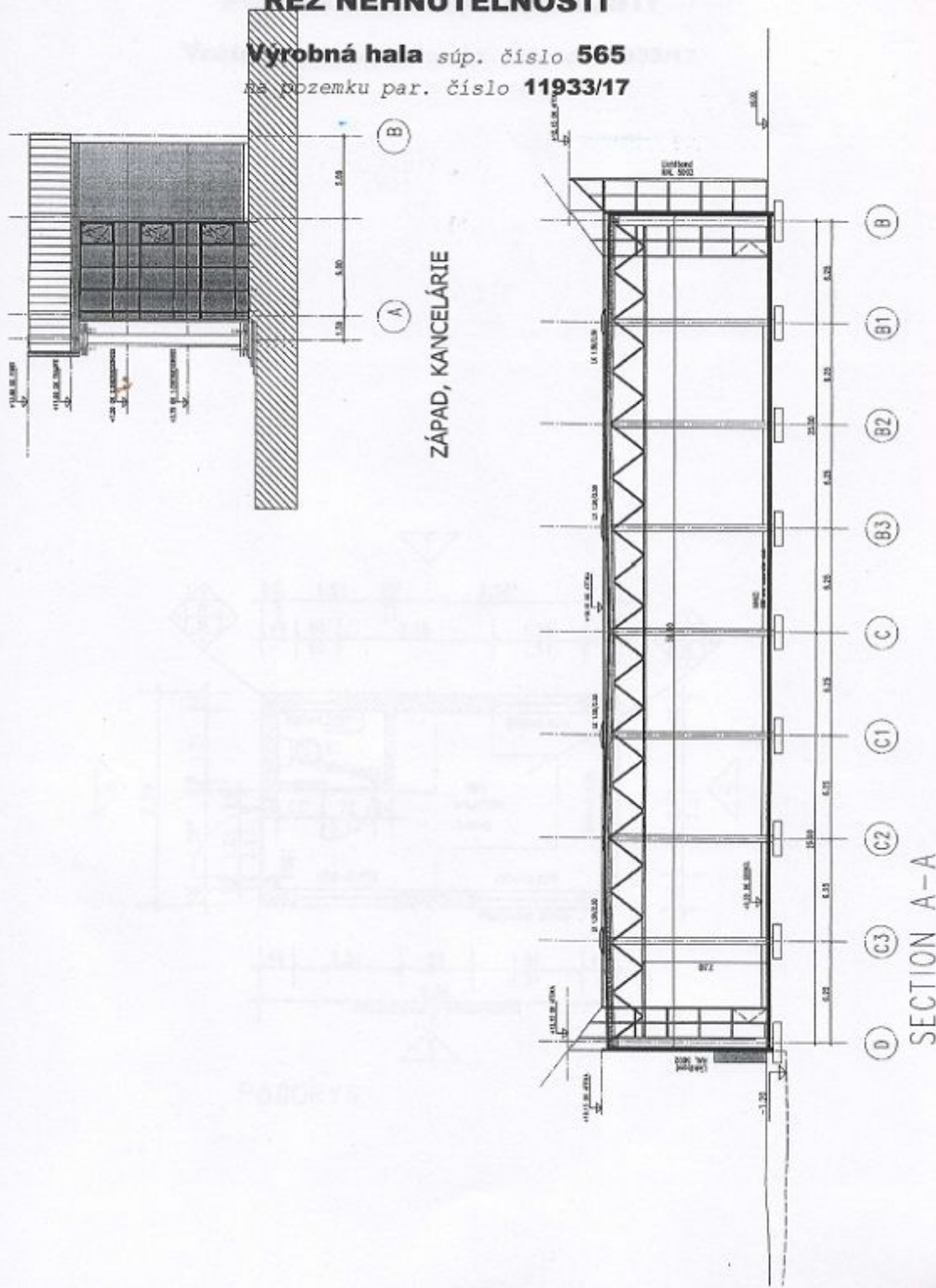


str. 39 - zn. posudok č. 48/2010

PRÍLOHA č. 6

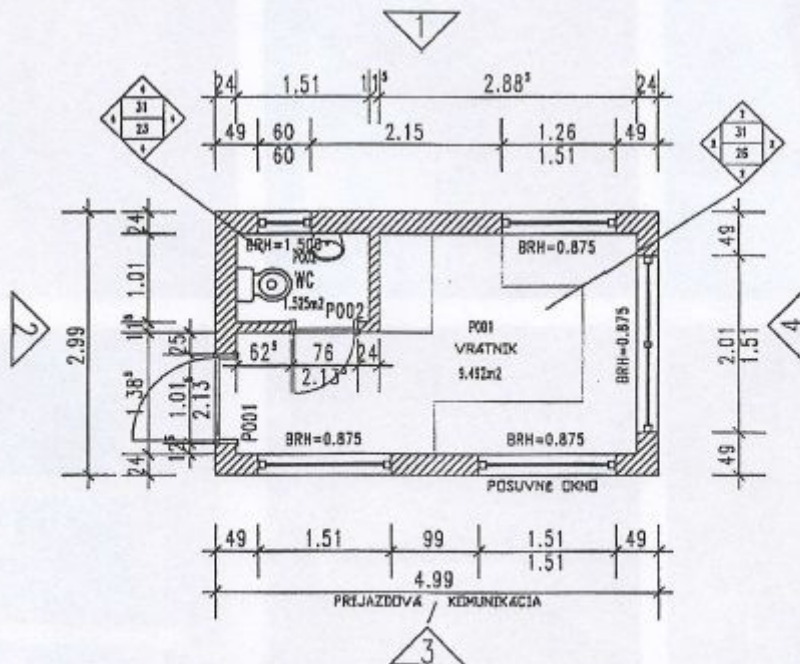
**REZ NEHNUTELNOSTI**

**Výrobná hala súp. číslo 565**  
na pozemku par. číslo 11933/17



## PÔDORYS NEHNUTEL'NOSTI

Vrátnica na pozemku par. číslo 11933/17



PÔDORYS





